

DOG BODIES



Essex Yarn-Dyed
Nutmeg

EARS & TAILS



Essex Yarn-Dyed
Cinnamon

DOGS IN SWEATERS FABRIC GUIDE

Use this guide to duplicate the fabric placement in the Large Quilt shown on the cover of my Dogs in Sweaters pattern. All of the fabrics used in this quilt are currently available (as of January 2017) from Robert Kaufman Fabrics.

Refer to the chart on the right side of the page and the quilt diagram below to make 5 sets of 3 blocks each, with each set having the same flannel sweaters. The larger Mammoth Flannel plaids will be used for the sweaters and the Shetland Flannels will be used for the sweater trim. As you work, be sure to pay attention to whether each block should be “left-facing” or “right-facing.”

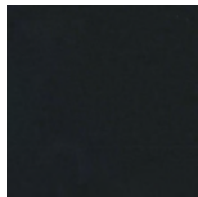
Other neutral Essex yarn-dyed linens, including Taupe, Spice, Leather, and Espresso may be substituted for the dog body and ear/tail fabrics. Don't hesitate to mix and match!

BACKGROUND



Essex Homespun
Charcoal

EYES & NOSES



Kona Pepper

BINDING

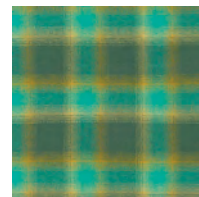


AZH-15456-184
Charcoal

SWEATERS



SRKF-15607-222
Redwood



SRKF-14887-71
Lagoon



SRKF-16428-295
Iron

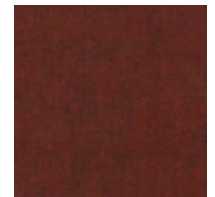


SRKF-15605-179
Rust



SRKF-14893-290
Ash

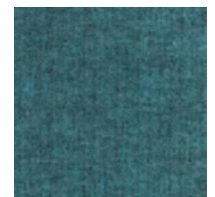
TRIM



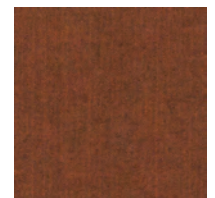
SRKF-14770-100
Maroon



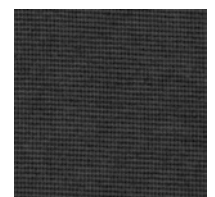
SRKF-14770-298
Kale



SRKF-13936-59
Ocean



SRKF-15614-180
Russet



SRKF-15613-305
Graphite

