

LEAVES

PINEAPPLES

FABRIC GUIDE FOR PINEAPPLE FARM PICNIC QUILT

Use this guide to duplicate the fabric placement I used in the quilt shown on the cover of my Pineapple Farm pattern. It was made using 40 fat quarters. Please refer to the pattern for additional fabric requirements and complete instructions.

The print fabrics I used are from my Pond collection for Robert Kaufman Fabrics (available January 2017). I also used a selection of Robert Kaufman's Essex Yarn-Dyed Linen blends and Kona Cotton Solids.

My background fabric is a print from Pond, AZH-16621-87.

On Page 4, the pattern describes sorting the fat quarters into 10 sets, each including 3 fat quarters for the pineapples and 1 fat quarter for the leaves. The swatches on this and the next page show my sets, which I've labeled A - J.

Follow the pattern directions to make 6 blocks from each set. If desired, refer to the layout diagram on the next page to duplicate my block layout exactly.

A



Essex YD Seafoam



AZH-16618-366



Kona Ice Frappe



AZH-16622-366

B



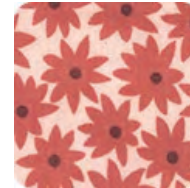
Essex YD Metallic Copper



Kona Terracotta



AZH-16620-115



AZH-16622-92

C



Essex YD Metallic Dusty Rose



Kona Dusty Peach



AZH-16621-144

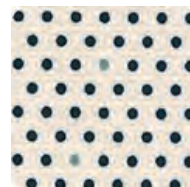


AZH-16622-144

D



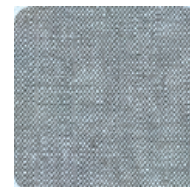
AZH-16620-188



AZH-16623-188



AZH-16621-335



Essex YD Shale

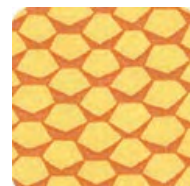
E



Essex YD Pickle



Kona Gold



AZH-16619-133



AZH-16621-291

F



Essex YD Aqua



AZH-16622-341



AZH-16619-341



AZH-16620-341

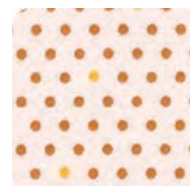
G



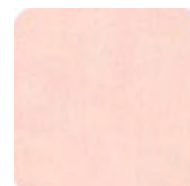
Essex YD Berry



AZH-16618-133



AZH-16623-133



Kona Shell

LEAVES

H



Essex YD Taupe

I



Essex YD Rust

J



Essex YD Metallic Water

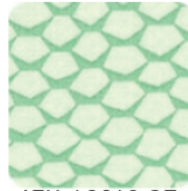
PINEAPPLES



Kona Celadon



AZH-16621-37



AZH-16619-37



AZH-16620-97



AZH-16619-97



AZH-16618-97



AZH-16618-336



Kona Fog



Kona Blue

BACKGROUND FABRIC



AZH-16621-87

