

FABRIC GUIDE FOR LARGE LISA THE UNICORN QUILT

Use this guide to duplicate the fabric placement in the Large Quilt shown in my Lisa the Unicorn Pattern. To make this quilt, I used one Warm Colorway (RU-715-40) and one Cool Colorway (RU-716-40) Roll-Up of my Terrarium print fabric collection, available February 2018 from Robert Kaufman Fabrics. The unicorn faces are Essex Linen (E014-308). The eyes are Kona Espresso, and the Borders and Sashing are Essex Yarn-Dyed Linen in Espresso (E064-1136).

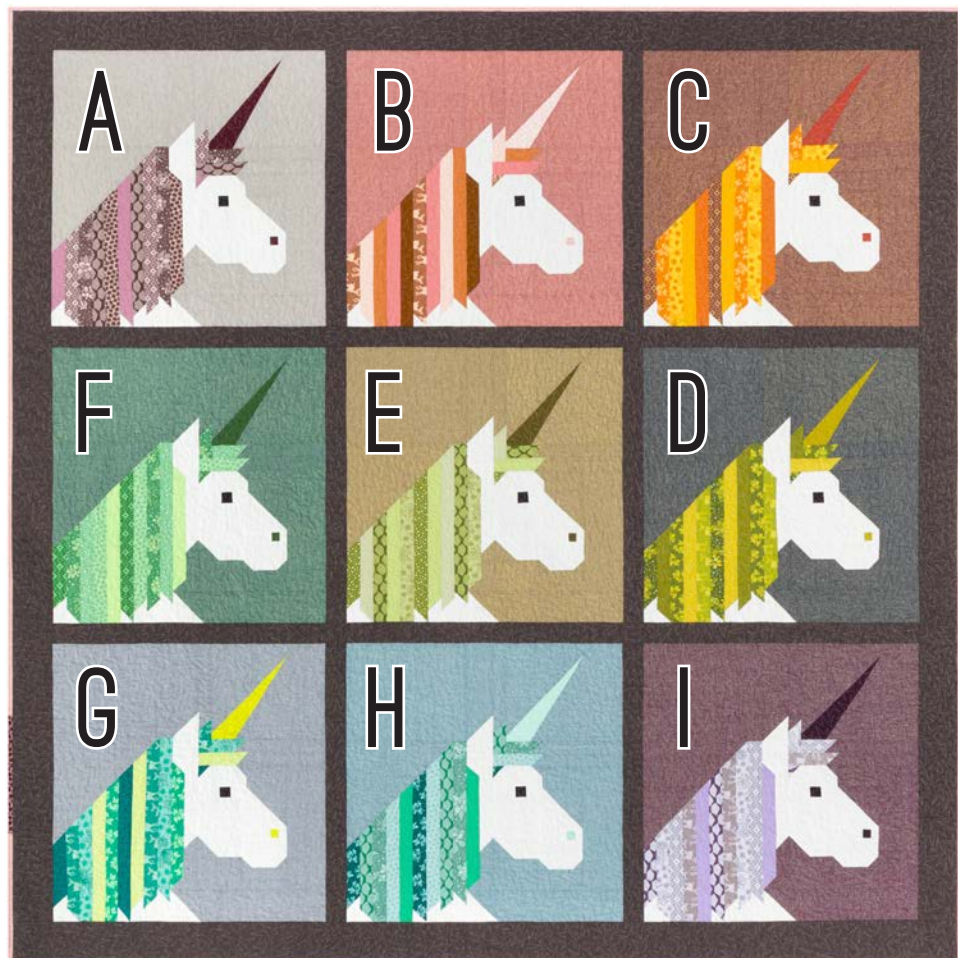
Each of the 9 blocks are made with 6 Roll-Up strips, five for the mane and one for the horn and nostril. Each of the 9 block backgrounds are made with a different color of Essex Yarn-Dyed Metallic. The blocks in the quilt photo below are labeled A - I. Refer to the chart on the next page to see which Roll-Up strips and which Metallic Essex fabric was used for each block.



RU-715-40



RU-716-40



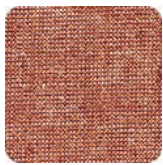
BACKGROUND



Oyster / E105-1268



Dusty Rose / E105-1131



Copper / E105-1086



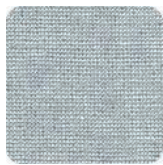
Storm / E105-458



Sand / E105-1323



Emerald / E105-1135



Fog / E105-444



Water / E105-171



Burgundy / E105-1054

A

MANE 1



Kona Foxglove



AZH-17284-173



AZH-17286-173



AZH-17279-371



AZH-17281-49



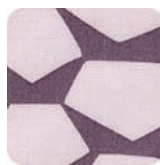
AZH-17286-43



Kona Ultramarine



AZH-17280-217



AZH-17283-24

MANE 2



AZH-17286-219



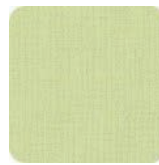
AZH-17281-362



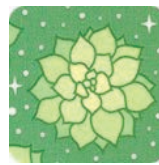
AZH-17280-8



Kona Bonsai



Kona Eucalyptus



AZH-17279-43



AZH-17284-40



AZH-17283-34



AZH-17285-24

MANE 3



AZH-17279-219



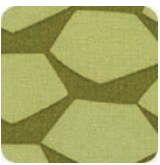
Kona Amber



AZH-17285-368



AZH-17280-371



AZH-17283-49



AZH-17281-43



AZH-17285-40

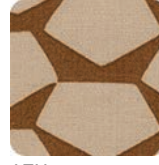


AZH-17279-34



AZH-17286-24

MANE 4



AZH-17283-119



Kona Salmon



Kona Grelow



Kona Wasabi



Kona Green Tea



AZH-17282-43



AZH-17281-54



AZH-17282-217



AZH-17284-24

MANE 5



AZH-17282-119



Kona Roasted Pecan



Kona Saffron



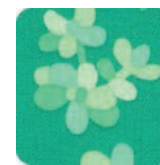
AZH-17284-371



AZH-17285-49



Kona Honeydew



AZH-17280-32



Kona Cypress



Kona Thistle

HORN & NOSTRIL



Kona Brick



AZH-17282-219



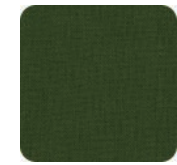
Kona Terracotta



Kona Pickle



Kona Moss



Kona Palm



Kona Acid Lime



Kona Ice Frappe



Kona Raisin

B

C

D

E

F

G

H

I